

Xaloy® EasyMelt® Injection Screw

Custom-tailored for your resins

- Optimum feed depth
- Optimum zone lengths
- Optimum metering depth

The Xaloy EasyMelt® screw combines the simplicity and economy of a conventional three-zone screw with the productivity and quality benefits of optimum material feeding, melting and metering. General-purpose injection screws leave hard-to-get molding profit on the table. The Xaloy EasyMelt® injection screw helps you recoup with screw geometry optimized for specific materials.

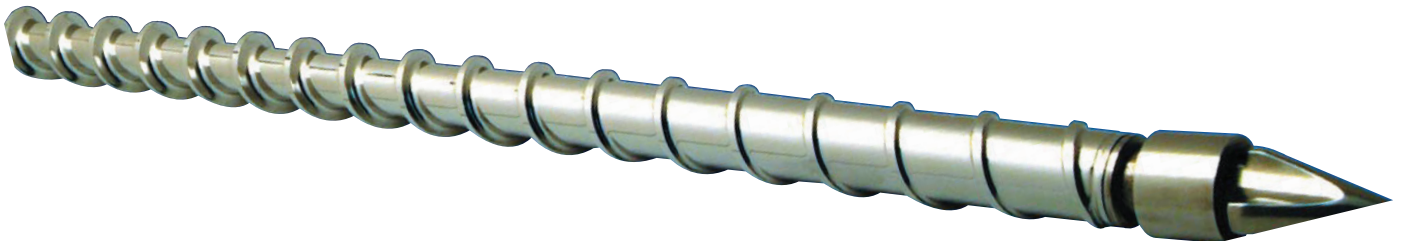
Features and Benefits

Typical applications

- Highly glass-filled materials
- Materials with metallic powders or mica fillers
- Shear-sensitive polymers
- Undemanding processes

Ready to meet your needs

- For more information, a recommendation for the screw best suited for your process or a quotation, contact your Nordson representative. For contact information visit www.nordsonpolymerprocessing.com.



What it can do for you

- Speed up screw recovery
- Reduce short shots
- Improve temperature control

On-the-money metering

Insufficient depth in the metering zone for a given material can reduce plasticating rates by 28% or more, but for some resins, too deep of a metering depth will not apply the proper amount of shear on the resin to allow for a uniform melt to be delivered to the mold. That's why a metering depth that's just right really pays off.

Efficient melting

Thanks to its resin-tailored feed depth, compression ratio and zone lengths, the Xaloy EasyMelt® screw delivers fully melted material to the metering zone. This avoids a major cause of intermittent short shots: partially filled flights and pressure instability in the metering zone.